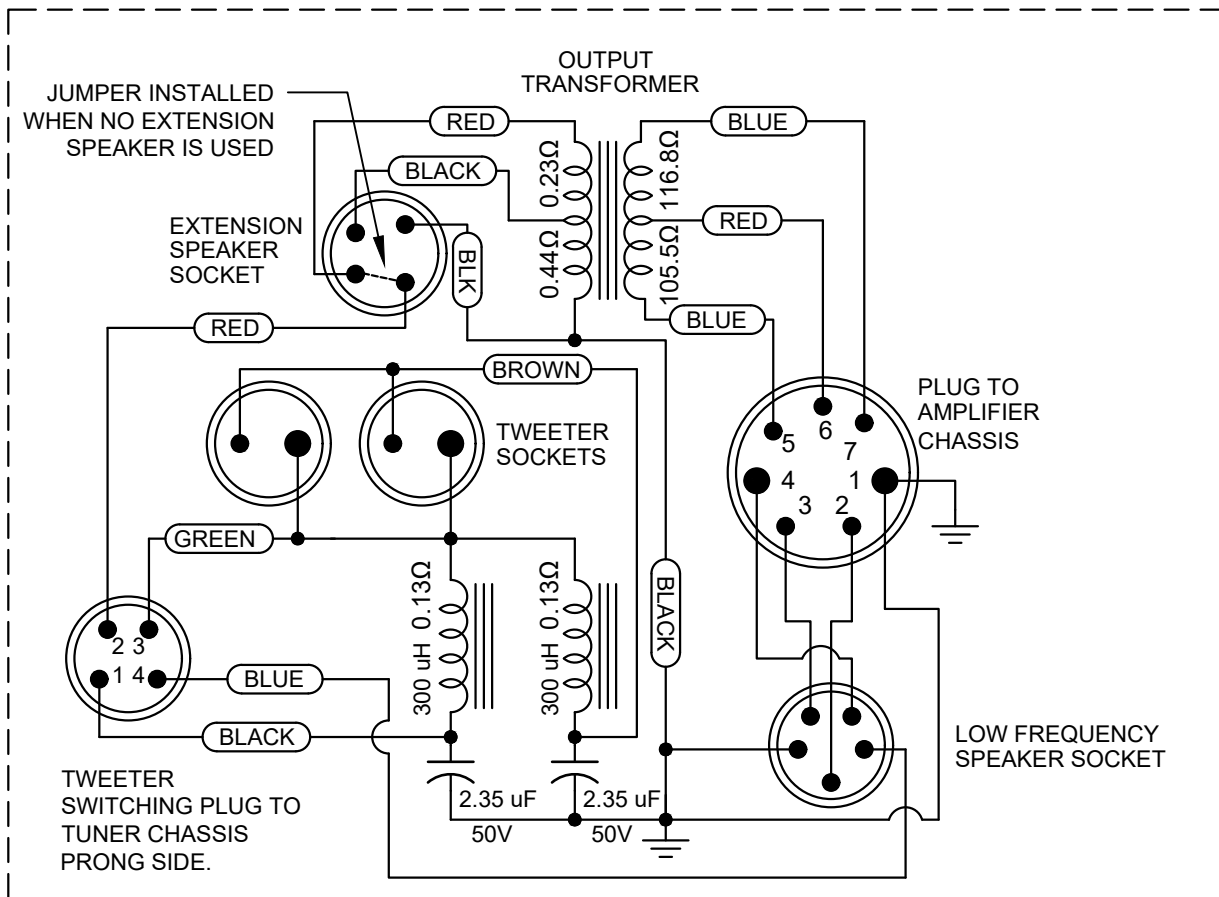


4 PIECE HI-FI SPEAKER SYSTEM (NETWORK SPEAKER SYSTEM)

NETWORK BASE ENCLOSED WITHING DOTTED LINES.



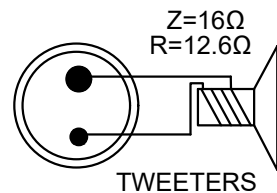
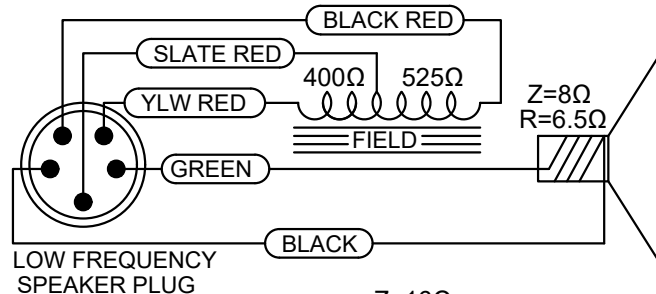
NOTES:

PRONG SIDE IS SHOWN ON ALL PLUGS, CABLE SIDE ON ALL SOCKETS

TWEETER SWITCHING IS NOT INSTALLED ON ALL UNITS.

CROSSOVER IS A 2nd ORDER BUTTERWORTH 12db/OCTAVE. CROSSOVER FREQ IS 6 KILOHERTZ

OUTPUT TRANSFORMER RESISTANCE MEASURED FROM ORIGINAL TRANSFORMER.



TWEETER SWITCHING IN TUNER CHASSIS

